

**Govt. of India**  
**Ministry of Human Resource Development**  
**Dept. of School Education and Literacy**  
**Mid-Day Meal Division**

**PAB-MDM meeting**  
**to consider and approve AWP&B 2020-21**

**(Date of the meeting: 29.05.2020)**



**APPRAISAL NOTE**

**MIZORAM**

**INDEX**

<b>Sl. No.</b>	<b>CHAPTER</b>	<b>Page no.</b>
<b>Overview</b>	Pre-requisite steps for submission of AWP&B	<b>2-3</b>
	Main Issues from Appraisal	
	Best practices	
<b>Part-A</b>	General Information	<b>4-7</b>
<b>Part-B</b>	Review of performance during 2019-20	<b>8-26</b>
<b>Part-C</b>	Recommendations of Appraisal team and quantification of variables for central assistance during 2020-21	<b>27-33</b>

---

**a. Overview: Status on Pre requisite steps required for submission of AWP&B, 2020-21**

<b>Pre-requisite step</b>	<b>Status</b>
e-transfer of funds to all schools	YES
100% payment of cost of food grains made to FCI	YES
100% payment of honorarium to cook-cum-helpers through e-transfer to their bank accounts.	NO
Annual and Monthly data entry for the FY 2019-20 completed.	YES
Automated Monitoring system operationalized for 100% schools	NO
Emergency Medical Plan is in place	YES
Action taken note on commitments given by the State Govt. during PAB Meeting of 2019-20	YES
Separate and detailed MME plan	YES
Action taken on complaints	--

**b. Main Issues from appraisal:**

- i. Delay in release of fund from State to schools (More than 3 months),
- ii. Proposal for 4 days Less coverage of working days (i.e. 216 days only) for Upper Primary for FY- 2020-21. (As per RTE Act., Minimum Working Days For UPY – 220 Days),
- iii. Very less (10) DLC Meeting conducted during FY - 2019-20 (in compare to one meeting per district per month),
- iv. No Transport assistance utilized during FY-2019-20,
- v. Very low utilisation (48% of Allocation) of Cooking Cost,
- vi. Social audit not conducted as per MHRD norms,
- vii. 77% Schools still using Firewood,
- viii. 8 Food samples found below the norms out of 46 food samples tested by Regional Institute of Paramedical and Nursing Science (RIPANS) Aizawl,
- ix. Very less Health Check-up of Children (57%) conducted during FY - 2019-20,
- x. 4% CCH Honorarium payment still out of e-Transfer of Banking system.

---

**C. Best Practices:**

- i. Additional State contribution towards cooking cost (i.e. Rs. 0.70 Per Child Per Day in Primary and Rs. 0.25 Per Child Per Day in Upper Primary),
- ii. Additional State contribution towards honorarium of cook cum helpers (i.e. Rs. 500 per CCH per month),
- iii. Regional Institute of Paramedical and Nursing Science (RIPANS) (run under Ministry of Health & Family Welfare, Govt. of India) has been engaged for testing of food samples,
- iv. Community contributes seasonal fruits, vegetables as a supplement to the meals served to children.

---

---

## **Part-A : General Information**

### **Introduction:**

Mid-Day Meal Programme exerts a positive influence on Enrolment and regularity of attendance amongst elementary students in the State of Mizoram. With a view to enhancing enrolment retention, attendance and simultaneously improving nutritional levels among children, this Programme was started in Mizoram from 15th August, 1995.

Mizoram's achievements through Mid-Day Meal Programme have been highly commendable. Attendance rates have increased significantly in both Primary Schools and Upper Primary Schools. The scheme also shows a positive impact on hygienic and health condition of children by providing cooked Mid-Day Meal and implementation of WIFS and De-Worming and also Health Check up of children. District Education Committees and School Management Committees play vital roles in Mid-Day Meal Programme.

### **1.1 *Brief history:***

Mid-Day Meal Programme was started in Mizoram from 15th August, 1995 by distributing raw rice to students. Although orders were issued to serve cooked meals to the students from the year 2002, the Programme could not be implemented on full scale since, the VECs and school authorities had to take up the Programme without cooks, kitchen shed and with inadequate kitchen devices in the schools.

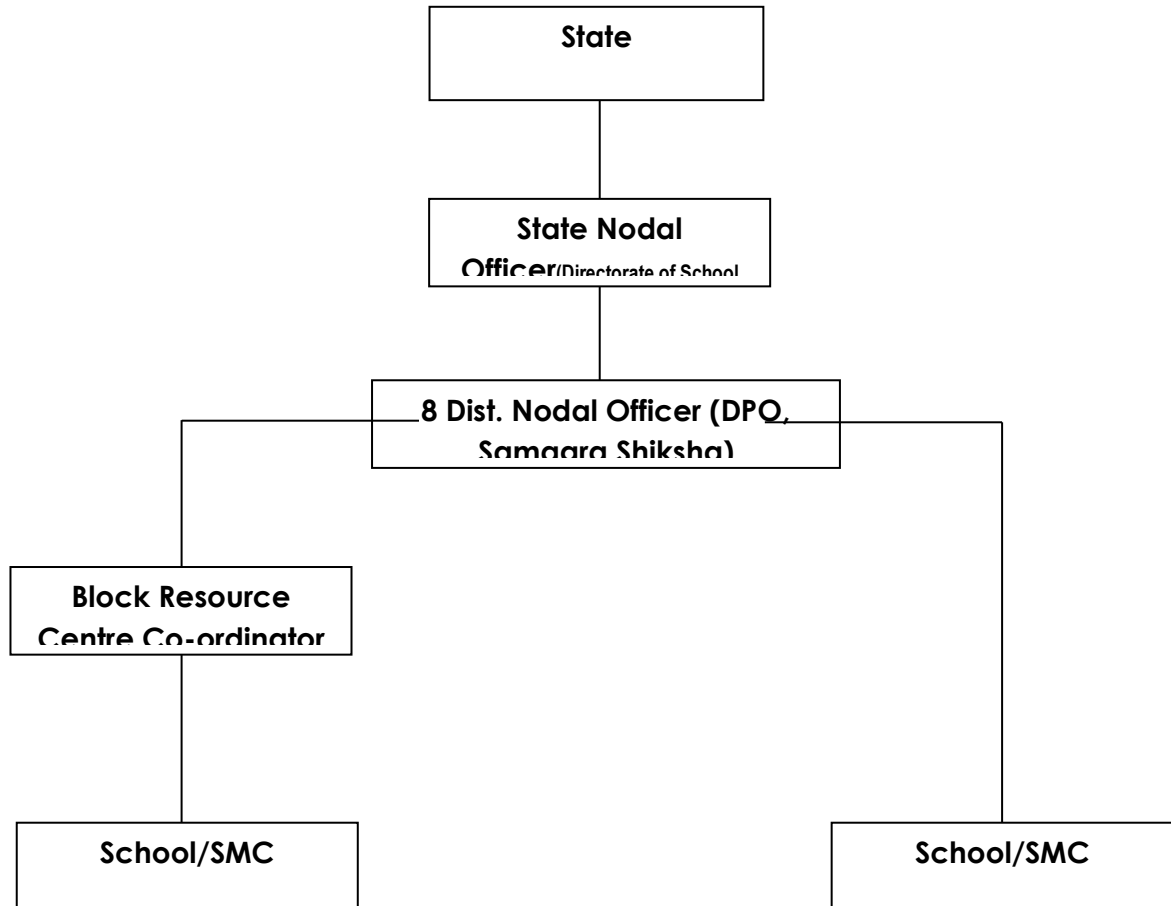
On 1st March 2005, under the Chairmanship of Principal Secretary to the Govt. of Mizoram, School Education Department, State Level Co-Ordination Committee on Mid-Day Meal had decided to implement the scheme throughout the state by serving cooked meals to Primary students despite numerable shortcomings. As a result, cooked meals were served to primary students in the entire state since 15th Feb. 2006. Unlike some other states in the country, the Primary students comprises of Class I to Class IV. From 1st August 2009 the scheme was extended to cover all Upper Primary Schools as well, and has been continued without interruption till date. The State Government started to cover Class-VIII from the academic session of 2011-2012.

This Scheme has significant and positive impact on regularity, attendance, retention, and discipline and health condition of the students.

---

## 1.2 Management structure

Management structure of implementation of Mid-Day Meal Scheme may be depicted as under



## 1.3 Process of Plan Formulation at State and District level:

District Project Co-Ordinator, Samagra Shiksha collected the required data such as number of Enrolment, Cook-cum-Helper engaged etc. from each and every Schools with the help of BRCCs and CRCCs and the same is used for calculation of requirement of Conversion Cost and Honorarium of Cook-cum-Helper and also other components

---

2. **Description and assessment of the programme implemented in the current year (2019-20) and proposal for next year (2020-21)with reference to:**

**2.1 *Regularity and wholesomeness of mid – day meals served to children; interruptions if any and the reasons therefore, problem areas for regular serving of meals and action taken to avoid Interruptions in future:***

During the year 2019-2020, the Mid Day Meal Programme was successfully implemented in all eligible Elementary Schools of the state without interruption. This, however, does not mean that the School Education Department was not facing difficulties. During this year, there has been slight delayed in release of fund from the state Government, resulting in delayed release of fund to schools. The strong efforts, commitment and enterprise of the teachers, parents and NGOs, have been crucial in the smooth implementation of the Programme in spite of the difficulties. Items for the menu to be served were taken on loan from local shops, teachers and parents contribute form their own source, and members of the communities come forward to donate certain items like firewood and vegetables. In this way, the programme has been sustained and implemented successfully without interruption till date.

**2.2 *System for cooking, serving and supervising mid-day meals in the schools***

In schools, meal is prepared and served by Cook-cum-Helper, who is engaged on a temporary basis for a period of 1(one) year which can be extended according to his/her performance. Supervision of Mid-Day Meal is done by school teachers, Community members and Local leaders also help in the supervision.

**1. Basic Information: (FY - 2019-20)**

S. No.	INDICATORS	STATUS		
		PRY	U PRY	TOTAL
<b>1. No. of Institutions</b>				
i)	Existing Institutions	1420	1091	2511
ii)	Covered during the year	1420	1091	2511
<b>2. No. of Children</b>				
i)	Approved by MDM-PAB	87152	39021	126173
ii)	Enrollment as on 30.9.2019	90602	41247	131849
ii)	Average No. of children availed MDM during 2019-20 vis-à-vis Enrollment	82573	38897	121470
		91%	94%	92%
<b>3. Coverage of children against Enrollment as per Quarterly Progress Report (QPR)</b>				
i)	Average no. of children availed MDM as per <b>QPR-1</b>	81359	38722	120081
		90%	94%	91%
ii)	Average no. of children availed MDM as per <b>QPR-2</b>	83354	37947	121301
		92%	92%	92%
iii)	Average no. of children availed MDM as per <b>QPR-3</b>	83199	40279	123478
		92%	98%	94%
<b>4. No. of Working Days</b>				
i)	Approved for <b>2019-20</b>	202	212	
ii)	Covered during <b>2019-20 upto 3<sup>rd</sup> QTR</b>	165	175	
<b>5. Per unit cooking cost Per child per day (in Rs.)</b>				
AVERAGE UNIT COOKING COST PCPD (Central Share)		4.03	6.04	
State's contributions in cooking cost per child per day (Minimum Mandatory)		0.45	0.67	
Total COOKING COST PCPD		4.48	6.71	
Additional Contribution of State in cooking cost per child per day		0.7	0.25	

---

---

**Part-B :Review of Performance in 2019-20(01.04.19 to 31.12.2019)**

2. Based on the information provided by the State Government in its AWP&B 2020-21, the performance during 2019-20 (01.04.19 to 31.12.2019) was reviewed. The major issues in implementation during 2019-20 are summarized as under: -

### **2.0 Coverage of Institutions**

**Coverage in terms of No. of institutions.**

**Difference between Existing Vs No. of institutions covered (Achievement) –**

**i) PRIMARY**

The number of existing institutions	= 1420
Number of institutions covered during 2019-20	= 1420 (100.%)

**ii) UPPER PRIMARY & UPPER PRIMARY WITH PRIMARY**

The number of existing institutions	= 1091
Number of institutions covered during 2019-20	= 1091 (100%)

### **2.1 Average number of children availed MDM vis-à-vis enrolment**

**2.1.1 a) Primary - Coverage in terms of No. of children. Difference between Enrolment vs. Average No. of Children Availed MDM (Achievement) (Refer Table 2.5 of the Analysis Sheet).**

Total Enrolment as on 30.09.2019	= 90602
Average number of children availed MDM during 2019-20	= 82573 (91%)

**b) Upper Primary: Coverage in terms of No. of children. Difference between Enrolment vs Average No. of Children Availed MDM (Achievement) – UPPER PRIMARY (Refer Table 2.6 of the Analysis Sheet).**

Total Enrolment as on 30.09.2019	= 41274
Average number of children availed MDM during 2019-20	=38897 (94%)



---

### **2.1.2 Average number of children availed MDM vis-à-vis PAB-MDM approval :**

a) **Primary : Coverage in terms of No. of children. Difference between PAB Approval (Target) vs. Average No. of Children Availing MDM (Achievement) (Refer Table 2.3 of the Analysis Sheet).**

The number of children approved by MDM PAB for 2019-20 = 87152  
Average number of children availed MDM during 2019-20 = 82573 (95%)

b) **Upper Primary: Coverage in terms of No. of children. Difference between PAB Approval (Target) Vs Average No. of Children Availing MDM (Achievement) (Refer Table 2.4 of the Analysis Sheet).**

The number of children approved by MDM PAB for 2019-20 = 39021  
Average number of children availed MDM during 2019-20 = 38897 (99.7%)

### **2.1.3 No. of Meals: Difference between No. of meal to be served (Target) Vs. No. of meals Served (Achievement) - PY+U PY (Refer Table 1.3 of the Analysis Sheet).**

The number of meals to be served during 2019-20 (Upto 3<sup>rd</sup> QTR) = 25877297  
The number of meals served during 2019-20 (Upto 3<sup>rd</sup> QTR) = 20431568 (79%)

## **2.2 FOODGRAINS**

### **2.2.1 Level of Opening Balance as on 01.04.19: (Refer Table 3.2.1 of the Analysis Sheet).**

The State has 173.82 MTs (6%) of food-grains as opening balance against the total allocation of 3001.36 MTs for 2019-20 as on 1.4.2019.

### **2.2.2 Level of unspent balance as on 31.12.19: (Refer Table 3.2.2 of the Analysis Sheet).**

The State level closing balance as on 31.12.2019 was 136.58 MTs (5%) against the total allocation of 3001.36 MTs. In all the Districts, the unspent Balance of food grains is available ranging from 2% to 5%.

---

### **2.2.3 Availability of Food grains: (01.04.19 to 31.12.19) : (Refer Table 3.4 of the Analysis sheet)**

The districts should have availability of at least 85% of the food grains allocation. State level availability as on 31.12.2019 was 2520.08 MTs (84%) of the total allocation.

### **2.2.4 Utilization of food grains: (Refer Table 3.6 of the Analysis sheet)**

An analysis of the utilization of food grains during the first three quarters of 2019-20 shows that State has utilized 283.50 MTs (79%) of the allocated food grains.

### **2.2.5 Payment of cost of foodgrains to FCI: (Refer Table 3.7 of the Analysis sheet)**

The FCI has submitted bills for Rs.70.39 Lacs during 1.4.2019 to 31.12.2019 towards cost of food grains. The State has made payment for Rs. 70.39 (100%) to the FCI. As per latest report of CI Mizoram, State Govt. of Mizoram has cleared all the outstanding amount of FCI. It is advised to State Govt. of Mizoram to ensure timely submission of Proposal for release from MHRD, Govt. of India to avoid any unwanted delay in payment to FCI / implementing agency / Schools for smooth implementation of MDMs at school level.

## **2.3 COOKING COST (PRIMARY + UPPER PRIMARY)**

### **2.3.1 Level of Opening balance as on 01.04.19: (Refer Table 4.2.1 of the Analysis Sheet)**

The State Govt. of Mizoram had reported Rs 67.87 Lacs (5%) as opening balance at the beginning of the financial year 2019-20.

### **2.3.2 Level of closing balance as on 31.12.19: (Refer Table 4.2.2 of the Analysis Sheet)**

The State Govt. had reported that Closing Balance of Rs. 307.65 Lacs (21% against allocation of Rs. 1467.09 Lakh) towards cooking cost as on 31.12.2019. It is advised to State Govt. of Mizoram to ensure timely submission of Proposal for release from MHRD, Govt. of India to avoid any obstacle for smooth implementation of MDMs at school level.

### **2.3.3 Utilization of Cooking cost: (Refer Table 4.6 of the Analysis Sheet)**

The districts should have utilized 75% of the allocation of cooking cost. State level utilization was Rs. 706.91 Lacs (48% against allocation). At the district level the utilization ranges around 48%.

Up to the 3<sup>rd</sup> QTR the utilization should have been 75% at least. In the most of the districts utilization has been reported less than 75%. State of Mizoram is requested to look into the issue of low utilization of cooking cost.

### **2.4 Reconciliation of utilization and performance during 2019-20 (1.4.19 to 31.12.19)**

#### **2.4.1 Mismatch, if any, in utilization of Food grains vis-à-vis cooking cost: (Refer Table – 5.1 of Analysis Sheet)**

<b>Sr. No.</b>	<b>District</b>	<b>% utilisation of foodgrains</b>	<b>% utilisation of Cooking cost</b>	<b>Mis-match in % points</b>
<b>1</b>	<b>2</b>	<b>3</b>	<b>4</b>	<b>5</b>
1	Aizawl	79%	48%	30%
2	Champhai	82%	48%	34%
3	Kolasib	79%	48%	31%
4	Lawngtlai	79%	48%	31%
5	Lunglei	79%	48%	31%
6	Mamit	79%	48%	31%
7	Serchhip	80%	48%	31%
8	Siaha	79%	48%	31%
	<b>TOTAL</b>	<b>79%</b>	<b>48%</b>	<b>31%</b>

### **2.5 Cook-Cum-Helper (PRIMARY + UPPER PRIMARY):**

PAB-MDM has approved 4894 cook-cum-helpers to be engaged during 2019-20 in the State. The State Govt. has engaged all 4793 cook-cum-helpers. The State Govt. has utilized Rs. 577.77 Lacs (79%) against the allocated funds for payment of honorarium to cook cum helper upto 3<sup>rd</sup> QTR of the year.

The State Govt. has proposed to retain 21532 Cook-Cum-Helpers for FY - 2020-21.

---

## **2.6 Utilization of MME(Refer Table – 7.3 of Analysis Sheet)**

Against the allocation of Rs. 49.86 Lakh as Central Assistance towards MME funds, the State Govt. has utilized for Rs. 46.33 Lakh (93 %) up to the 3<sup>rd</sup> QTR of the year. The utilization of MME should have been at least 75%. State Govt. has share the MME funds with school for Hand washing, cleaning, minor repair and maintenance etc. at school level.

It is observed that, State Govt. has not implemented State Project Management Unit (SPMU) with Team of Expert in every dimension of scheme i.e. Finance, Plan & Monitoring, Nutrition, IT/MIS/AMS, Capacity Building, Media & Planning etc. Still, No Manpower exist at Block level. State Govt. is advised to implement the above mentioned SPMU & Person should be posted at Block level immediately before 30 September, 2020.

Further, it is requested to State Govt. of Mizoram to look into the issue of Media Activity to public access to know the right of children under MDMS for the better involvement of community

## **2.7 Utilization of Transportation Assistance(Refer Table – 8.3 of Analysis Sheet)**

Against the allocation of Rs. 119.15 lakh as Central Assistance towards funds for Transportation Assistance, the State Govt. has not utilized Transport Assistance till 31.12.2019 due to non submission of bills by Transporter. It is advised to State Govt. to look into the issue of non utilization of Transport Assistance (TA). State Govt. may instruct to Transporter for time bound submission of Bills before 10<sup>th</sup>. Of next month of delivery of food grains and the same should be cleared by District Administration / State Govt. before 20<sup>th</sup>.of that month itself.

## **2.8 Construction of Kitchen-cum-Stores (KS) (Reference Table -9.1.1 of Analysis Sheet)**

Central Assistance of Rs. 3080.50 Lakh has been released for construction of 2541 Kitchen-cum-Stores. As on 31.12.2019, construction has been completed for 2532 Kitchen-cum-Sores. The funds for 9 New Kitchen cum stores has received after Dec. 2019. It is advised to state govt. of Mizoram to complete these 9 New Construction of Kitchen cum Store before Dec. 2020.

The State Govt. has not proposed any repair of more than 10 years old Kitchen cum stores for FY - 2020-21.

---

## **2.9 Procurement of Kitchen devices (Reference Table -9.2.2 of Analysis sheet)**

Central Assistance of Rs. 128.12 lakh has been released towards procurement of 2555 New units of Kitchen Devices during 2006-07 to 2019-20. The State Govt. has reported that 2548 Units for Rs. 127.40 has been already procured. And the balance of 7 New Unit of Kitchen Devices will be procured before 30 September, 2020.

The State Govt. has not submitted any proposal for New Kitchen devices for FY-2020-21.

## **2.10 Replacement of Kitchen Devices (Reference Table -9.2.1 of Analysis sheet)**

Central Assistance of Rs. 115.45 lakh has been released towards replacement of 2309 units of Kitchen Devices during 2012-13 to 2019-20. The State Govt. has reported that all 2309 units of Kitchen Devices have been replaced. Govt. of India appraised the efforts of State Govt. of Mizoram for their 100% achievements.

State Govt. UT has submitted the proposal for replacement of 567 Kitchen Devices against Total sanctioned 567 Kitchen devices in the year 2013-14. The total amount for Replacement of 567 Kitchen Devices is Rs. 72.55 Lakh out of which the Central Share required for this is Rs. 65.30 lakh and State Govt. Share is Rs. 7.25 Lakh.

### 3. Data Entry Status on the MIS Web Portal

In order to smooth function of MDMS, Ministry of HRD, MDM Division has developed web based monitoring system i.e. Web based MIS in collaboration with NIC. In this web portal State/District/Block users have to make Annual and Monthly data entry into the web portal through online. The State should monitor data entry activities to be made timely manner by District/Block users into the portal. The Annual and monthly data entry status as on December, 2019 of the State is given below:-

#### 3.1 Annual Data Entry:

The district wise Annual data entry status is given below:-

Report Generated on : Friday, 08 May 2020 11:22 PM					
<b>School Annual Data Entry Status Report For Financial Year : 2019 – 2020</b>					
<b>State / UT : MIZORAM</b>					
<b>S. No.</b>	<b>District</b>	<b>Total Schools</b>	<b>Completed Schools</b>	<b>Completed Percentage</b>	<b>Pending Schools</b>
1	AIZAWL	509	507	[ 99.61 %]	2
2	CHAMPHAI	148	148	[ 100 %]	
3	KHAWZAWL	60	60	[ 100 %]	
4	KOLASIB	174	174	[ 100 %]	
5	LAWNGTLAI	404	404	[ 100 %]	
6	LUNGLEI	547	546	[ 99.82 %]	1
7	MAMIT	272	270	[ 99.26 %]	2
8	SAIHA	191	191	[ 100 %]	
9	SAITUAL	53	53	[ 100 %]	
10	SERCHHIP	139	139	[ 100 %]	
	<b>Total</b>	<b>2497</b>	<b>2492</b>	<b>[ 99.8 %]</b>	<b>5</b>

State Govt. of Mizoram has completed 99.8% Annual data entry on the web portal for 2019-20. It is requested to ensure to time bound completion of Annual Data entry for 100% Schools of Mizoram.

### 3.2 Monthly Data Entry

The district wise Monthly data entry status is given below:-

Report Generated on : Saturday, 09 May 2020 12:58 AM																
School Monthly Data Entry Status Report For Financial Year : 2019 – 2020																
State / UT : MIZORAM																
S. No	District	Total Schools	Freeze Schools	April	May	June	July	August	September	October	November	December	January	February	March	Avg.
1	AIZAWL	509	507	507	507	507	507	507	503	503	503	503	502	350	240	470
2	CHAMPHAI	148	148	148	147	147	147	147	147	147	147	147	147	147		147
3	KHAWZAWL	60	60	60	60	60	60	60	60	60	60	60	60	60		60
4	KOLASIB	174	174	174	174	174	174	174	174	174	174	174	174	170		174
5	LAWNGTLAI	404	404	403	403	403	403	403	403	389	388	388	387	387	238	383
6	LUNGLEI	547	546	544	544	544	544	544	544	544	544	544	544	544	544	544
7	MAMIT	272	270	270	270	270	270	246	246	246	246	246	246	246	131	244
8	SAIHA	191	191	191	191	191	191	191	191	191	191	191	191	191	30	178
9	SAITUAL	53	53	53	52	52	52	52	52	51	51	51	51	51		52
10	SERCHHIP	139	139	139	139	139	139	139	139	139	139	139	138	138	138	139
	<b>TOTAL</b>	<b>2497</b>	<b>2492</b>	<b>2489</b>	<b>2487</b>	<b>2487</b>	<b>2487</b>	<b>2463</b>	<b>2459</b>	<b>2444</b>	<b>2443</b>	<b>2443</b>	<b>2440</b>	<b>2284</b>	<b>1321</b>	<b>2354</b>

State Govt. of Mizoram has completed 94% Monthly data entry on the web portal for 2019-20 till March 2020. It is requested to ensure to time bound completion of Monthly Data entry for 100% Schools of Mizoram.

### 3.3 Comparison of Data from MIS and AWP&B

COMPONENT	MIS	AWP&B
<b>Institutions</b>	2497	2511
<b>Working Days</b>	204	170
<b>Coverage of children</b>	124196	121470
<b>CCH engaged</b>	4819	4793
<b>CCH Hon. Utilisation (Rs. in Lakhs)</b>	740.55	577.77
<b>Cooking Cost Utilisation (Rs. in Lakhs)</b>	1266.93	706.91
<b>Food Grains Utilisation (in MTs)</b>	3600.35	2383.5

Slightly Mismatch between MIS and AWP&B 2020-21 in coverage of all the components of MDMS. It is requested to State of Mizoram to look into the mismatch.

### 3.4 Automated Monitoring System (AMS)

The district wise AMS data is given below:-

Annual Work Plan & Budget 2020 - 2021															
Table AT - 23 A - Implementation of Automated Monitoring System during 2019 - 2020															
State / UT : MIZORAM								During 01.04.2019 To 31.03.2020							
S. No.	District	Total Institutions	April	May	June	July	August	September	October	November	December	January	February	March	Avg.
			2019	2019	2019	2019	2019	2019	2019	2019	2019	2020	2020	2020	
1	AIZAWL	522	367	398	422	437	472	485	458	402	278	370	386	0	373
2	CHAMPHAI	273	131	165	251	250	250	248	227	226	175	216	214	0	196
3	KOLASIB	179	101	117	134	143	155	165	162	158	106	143	136	0	127
4	LAWNGTLAI	408	81	112	129	126	121	131	122	119	97	96	87	0	102
5	LUNGLEI	508	189	227	307	295	339	339	314	284	124	252	229	0	242
6	MAMIT	285	133	196	216	234	258	257	223	209	156	217	230	0	194
7	SERCHHIP	144	100	117	116	119	128	133	122	119	96	112	100	0	105
8	SIAHA	192	87	105	103	102	99	97	88	74	38	38	46	0	73
	<b>Total</b>	<b>2511</b>	<b>1189</b>	<b>1437</b>	<b>1678</b>	<b>1706</b>	<b>1822</b>	<b>1855</b>	<b>1716</b>	<b>1591</b>	<b>1070</b>	<b>1444</b>	<b>1428</b>	<b>0</b>	<b>1411</b>

Report Generated on : Sunday, 10 May 2020 01:30 AM

Max. 1855 (74%) schools covered under AMS in the month of Sept. 2019. The less number is due to network problem in remote hilly region. Some of the HMs have been transferred or retired so the new mobile numbers have not been updated in the portal. It is suggested to State Govt. officials to instruct the HMs to update the mobile numbers in the portal at the earliest so that 100% data of the daily beneficiary is reported.

### 3.5 Direct To Beneficiary (DBT)

The district wise DBT Monthly data entry status is given below:-

<b>DBT Monthly Data Entry Status for Financial Year : 2019-2020</b>														
<b>Report Generated on : Sunday, 03 May 2020 09:25 PM</b>														
S. No.	State / UT	April	May	June	July	August	September	October	November	December	January	February	March	
1	Mizoram	Yes	Yes	Yes	Yes	Yes	Yes	Yes	Yes	Yes	Yes	Yes	Yes	--

State of Mizoram has furnished their DBT Monthly data entry up to Feb 2020 for the FY – 2019-20. As per MHRD, Govt. of India instruction, State / UT has to furnish their DBT Monthly Data entry by 10<sup>th</sup>. Of every month for previous month operationalization. State Govt. is advise to ensure to furnish their DBT Monthly Data entry on-time.



#### 4. Release of funds

The routine procedure for release of cooking cost in the state of Mizoram is when the fund for Central Assistance is received by the department it was immediately approached the Finance Department for immediate fund allocation in the state budget and when after the fund was allocated in the appropriate head of account, the department then proposed the same to Finance Department to accord sanction. When Finance Department released fund and drawn, the department released to the districts and the districts released to Block level and further to school. These are done through E-Transfer. There is no direct transfer from State Level to school in the state.

Funds are transfer from State level to District level which in turn released the fund to Block Level by means of E-Transfer. In some district like Siaha and Lawngtlai District where only two or three Banks are available. Fund cannot be transferred to all the school through E-Transfer and some schools are paid in cash which is easier and benefitted in respect of stakeholders of MDM.

Dates when the fund were released to State Authority/Directorate/District/Block /Gram Panchayat and finally to the Cooking Agency/School :

Sl No	Installment/ Components	Amount (in lakh)	Date of receiving of funds by the State / UT	Date of release to Directorate	Date of release to District	Amount(in lakh)	Date of release to Block	Amount(in lakh)	Date of release to Gram Panchayat/School
<b>Recurring Central Assistance</b>									
1	Adhoc Grant (25%)	451.83	01.05.2019	26.07.2019	29.07.2019	414.88	14.08.2019	141.88	19.08.2019
2	Balance of 1st Instalment	599.35	09.09.2019	23.10.2019	27.11.2019	618.08	06.12.2019	618.08	10.12.2018
3	2nd Instalment	758.61	23.12.2019	18.03.2020	28.03.2020	632.88	08.04.2020	632.88	15.04.2020
<b>Non-Recurring Central Assistance</b>									
4	Kitchen-cum-store	28.35	25.02.2020	0	0	0	0	0	0
5	Kitchen Devices	0.72	02.03.2020	0	0	0	0	0	0
6	Repair of Kitchen-cum-store	137.97	25.02.2020	0	0	0	0	0	0
7	Replacement of Kitchen Devices	71.10	02.03.2020	0	0	0	0	0	0

---

State Govt. of Mizoram has to follow many procedure in course of file movement at State level. Funds is sometimes delay for obtaining allocation and sanction which can not be curtailed. No other delay occurred in past.

In case of delay in release of funds from the State Government, resulting in delay in release of funds to schools, the strong efforts and commitment and also enterprise of the teachers, parents and NGOs etc. have contributed the crucial support in the smooth implementation of the Programme in spite of the difficulties caused by late release of funds. Items for the menu to be served were taken on loan from local shops, teachers and parents contribute form their own source, and members of the communities come forward to donate certain items like firewood and vegetables.

In every release of funds, district office submitted utilization of fund in a prescribed format. At the end of the year, unspent balance which is to be carried over for the next financial year is used as opening balance for the district. Apart from this, there can be no initiative for pre-positioning of funds by the State Government due to financial constraints.

**5. Menu of MDM :WEEKLY MENU – DAY WISE**

School Management Committees have been authorized to decide the weekly - day wise menu keeping in view the choice and liking of the children of the area, in order to make the meal more acceptable at local level.

The schools have also been directed to ensure that the weekly - day wise menu as approved by the School Management Committee is displayed on the Notice Board of the school and to see that the cooking / distribution of meal is strictly, as per the displayed weekly - day wise menu below ;

**WEEKLY MENU AND COOKING COST PER CHILD FOR PRIMARY**

Note: Cost of fuel is not written in the weekly menu

**MONDAY Rice with potato curry**

Food Group	Ration Size (g)	Energy (kcal)	Protein (g)	Cooking Cost Per Child (In rupees)
Rice	110	350	6.10	-
Lentil dal	30	67	5.00	1.65
Potato curry	50	52	3.3	2.48
Oil	10	47	-	0.50
Roasted groundnuts	10	57.4	3	0.40
Salts and condiments	3	-	-	0.08
<b>TOTAL</b>		<b>573.4 Kcal</b>	<b>17.4 g</b>	<b>Rs 5.11</b>

**TUESDAY Rice with soya chunks (Nutrella)**

Food Group	Ration Size (g)	Energy (Kcal)	Protein (g)	Cooking Cost Per Child (in rupees)
Rice	110g	350	6.10	-
Soya chunks	30g	68	10.0	1.65
Potato and pumpkin	30+20	30+22	1.90+2.1	2.48
Oil	10	47	-	0.50
Roasted groundnuts	10	57.4	3	0.40
Salts and condiments	3	-	-	0.08
<b>TOTAL</b>		<b>574.4 Kcal</b>	<b>19.1g</b>	<b>Rs 5.11</b>

*Aiswarya*  
 C. Lalramhluni Dietician  
 M.Sc (Human Development & Dietetics in Human Nutrition)  
 LBL Pharmacy, Israel Point  
**LBL PHARMACY**  
 Dawrpui, Barga Bazar  
 Aizawl

**WEDNESDAY Paustik khitcheri**

Food Group	Ration Size (g)	Energy (Kcal)	Protein (g)	Cooking Cost Per Child (in rupees)
Rice	110	350	6.10	-
Lentil dal	30	68.9	10	1.65
Potato + pumpkin +mustard leaves	20+15+15	25+15+12	1.3+1+1	2.48
Oil	10	45	-	0.50
Roasted groundnuts	10	57.4	3	0.40
Salts and condiments	3	-	-	0.08
<b>TOTAL</b>		<b>573.3Kcal</b>	<b>22.4g</b>	<b>Rs 5.11</b>

**THURSDAY Rice with soya chunks and vegetables**

Food Group	Ration Size (g)	Energy (Kcal)	Protein (g)	Cooking Cost Per Child (in rupees)
Rice	110	350	6.10	-
Soya chunks	30	68	10.0	1.65
Potato + cauliflower green	30+20	25+25	2.3+1.0	2.48
Oil	10	48	-	0.50
Roasted groundnuts	10	57.4	3	0.40
Salts and condiments	3	-	-	0.08
<b>TOTAL</b>		<b>573Kcal</b>	<b>22.4g</b>	<b>Rs 5.11</b>

*Aiswarya*  
 C. Lalramhluni Dietician  
 M.Sc (Human Development & Dietetics in Human Nutrition)  
 LBL Pharmacy, Israel Point  
**LBL PHARMACY**  
 Dawrpui, Barga Bazar  
 Aizawl

FRIDAY

Khitcheri

Food Group	Ration Size (g)	Energy (Kcal)	Protein (g)	Cooking Cost Per Child (in rupees)
Rice	110	350	6.10	-
Green gram dal (moong dal)	30	68	10	1.65
Mustard + pumpkin	30+20	23+29	1.0+2.3	2.48
Oil	10	48	-	0.50
Groundnuts	10	57.4	3	0.40
Salts and condiments	3	-	-	0.08
<b>TOTAL</b>		<b>581.4 Kcal</b>	<b>22.4g</b>	<b>Rs5.11</b>

  
 C. Lalramthuni Dietician  
 M.Sc (Human Development & Dietetics in Human Nutrition)  
 LBL Pharmacy, Israel Point  
**L. B. L. PHARMACY**  
 Dewripui, Bara Bazar  
 Aizawl

**WEEKLY MENU AND COOKING COST PER CHILD FOR UPPER PRIMARY**

Note: Cost of fuel is not written in the weekly menu

**MONDAY Rice with potato curry**

Food Group	Ration Size (g)	Energy (Kcal)	Protein (g)	Cooking Cost Per Child (in rupees)
Rice	170	520	10.2	-
Lentil dal	35	110	7.9	2.45
Potato curry	70	80	2.0	3.11
Oil	15	70	-	0.75
Salts and condiments	3	-	-	0.10
TOTAL		780 Kcal	20.1g	Rs 6.41

**TUESDAY Rice with soya chunks (Nutrella)**

Food Group	Ration Size (g)	Energy (Kcal)	Protein (g)	Cooking Cost Per Child (in rupees)
Rice	170	520	10.2	-
Soya chunks	35	120	7	2.45
Potato and pumpkin	50+20	55+25	2.1+2	3.11
Oil	15	70	-	0.75
Salts and condiments	3	-	-	0.10
TOTAL		790 Kcal	21.3 g	Rs 6.41

**WEDNESDAY Paushtik khitcheri**

Food Group	Ration Size (g)	Energy (Kcal)	Protein (g)	Cooking Cost Per Child (in rupees)
Rice	170	520	10.2	-
Lentil dal	35	105	7	2.45
Potato+pumpkin+mustard leaves	35+25+10	35+30+15	2.0+1.0+1.0	3.11
Oil	15	70	-	0.75
Salts and condiments	3	-	-	0.10
TOTAL		775Kcal	21.2g	Rs 6.41

  
 C. Lalramhluni Dietician  
 M.Sc (Human Development & Dietetics In Human Nutrition)  
 LBL Pharmacy, Israel Point  
 L.B.L PHARMACY  
 Dawrpui, Bara Bazar  
 Aizawl

**THURSDAY**                      **Rice with soya chunks and vegetables**

Food Group	Ration Size (g)	Energy (Kcal)	Protein (g)	Cooking Cost Per Child (in rupees)
Rice	170	520	10.2	-
Soya chunks	35	100	7	2.45
Potato+cauliflower green	50+20	45+35	2.0+2.1	3.11
Oil	15	70	-	0.75
Salts and condiments	3	-	-	0.10
TOTAL		770 Kcal	21.3g	Rs 6.41

**Friday**                              **Khitcheri**

Food Group	Ration Size (g)	Energy (Kcal)	Protein (g)	Cooking Cost Per Child (in rupees)
Rice	170	520	10.2	-
Green gram dal(moong dal)	35	100	7.1	2.45
Mustard leaves+pumpkin	40+30	45+25	2.0+1.0	3.11
Oil	15	70	-	0.75
Salts and condiments	3	-	-	0.10
TOTAL		760 Kcal	20.3g	Rs 6.41

  
 C. Lalramhani Dietician  
 M.Sc (Human Development & Dietetics in Human Nutrition)  
 LBL PHARMACY  
 Dawrpui, Baga Bazar  
 Aizawl

**Constraint about the Food Items used for MDMS** -- Double Fortified Salt and Fortified Edible Oil is not locally available in the state, and efforts to tie-up with the Food, Civil Supplies & Consumer Affairs Department of the State have also not yielded any positive result. This may be due to the comparatively less demand for the items in the state, which makes it commercially non-viable for any prospective supplier. Schools are therefore using Iodized Salt, which is considered the next best thing and is available in the State

According to entitlement of cooking cost per day per child which is contributed by Central & state, Menu is fixed at 508 kcal with 12.6gms of protein in respect of Primary School and 762 kcal with 20gms of protein in Upper Primary in the state.

All the schools are supposed to follow Menu Calendar prepared by Mid-Day Meal Cell as far as possible. Further, they are encouraged to prepared locally available vegetables that can easily be obtained in a lower price. There are many alternate vegetables which are not mentioned in the menu and which is encouraged to serve for Mid-day Meal.

All the Schools are instructed to serve Mid-Day Meal between 12:00am to 12:45am and this has to be completed within 45 minutes.

---

**6. School Nutrition Gardens**

There are as many as existing 684 Kitchen Garden are available in the State and also 198 numbers are in progress and further that there are 132 numbers of Kitchen Garden targeted during 2020-2021. Circular was issued to all the school and encourage to utilize vacant land for Kitchen Garden. There is no specific mechanism for setting up and maintenance of Kitchen Garden.

Krishi Vigyan Kendras(KVK) and Agriculture Department of Mizoram are contacted for improvement of Kitchen Garden. Of course, they are welcome and accepted our request though training of Teachers is the system suggested from themselves, the Department is now considered for imparting training of Teachers for improvement of Kitchen Garden. No details of mechanisms is adopted for setting up and maintenance of Kitchen Garden.

**7. Supplementary Nutrition**

**Additional Food Items** - Due to limited fund provision to purchase additional food items, all the schools are not expected to serve additional food from conversion cost. At the same time, there are many schools having Kitchen Garden, particularly in rural areas, which can serve additional food items from their own harvests. There have also been instances of parents contributing vegetable items like pumpkin, brinjals, green leafy vegetables, etc. and fruit items like like Banana, Palya, Jackfruit, Mango etc. These are either seasonal or occasional, and the frequency of their servings as well as per unit cost per day are difficult to track and document.

**8. Community Participation (Tithi Bhojan etc.)**

Contribution of commodity in the line with Tithi Bhojan is not practiced in the state, but in many villages' parents of children contributed different articles such as vegetables, fire wood etc for Mid-Day Meal. Sometimes, teachers' themselves contributed for MDM when they are upgraded into higher scale etc.

**9. Monitoring Mechanism**

Though there is a provision of community monitoring at school level i.e Mother roster, inspection of Mid-Day Meal, etc., the level of participation by the community in these aspects have been relatively low. Inspection registers are maintained in schools.

---

As mentioned above, community participation in tasting of meals is still low. In fact, it is absent in most schools despite numerous appeals to the community members.

**10. Social Audit**

Social Audits is conducted in Champhai District by State Institute of Rural Development & Panchyati Raj during November 2019. Detailed report is already submitted to MHRD, Govt. of India.

When the report of Social Audit was submitted to the State Government of Mizoram, the same was forwarded to all District Project Coordinator to take an appropriate action as suggested in the report. Details of action taken is still awaited.

State Government of Mizoram, School Education Department will conduct another Social Audit in the remaining 2 Districts depending upon their performance in the next year.

**11. Testing of meals**

Testing of food sample which are commonly prepare for Mid-Day Meal collected from the schools is conducted in RIPANS(Regional Institute of Paramedical and Nursing Science) in Aizawl Mizoram. The result are found satisfactory. Therefore, arrangement will be made so as to have a number of times in the next financial year.

As there is no NABL/recognized laboratory for testing of food sample in the state Regional Institute of Paramedical and Nursing Science (RIPANS) run under Ministry of Health & Family Welfare, Govt. of India is engaged.

Testing of food sample is conducted once in the district level which were collected food sample from the school during 2019-20. Some district brought by using storage container to Aizawl(RIPANS) for testing. It will try to conduct more number of times in the next financial year.

All district in the state have conducted various Food Sample Testing collected from Schools during 2019-20 at RIPANS and some results are found are slightly lower to compare with the Norms under Mid-Day Meal.



---

As mentioned above, the report of food sample testing revealed that the quality of food prepared in sample schools is below the Central norms. A circular directing all schools to improve the menu so as to increase nutritional contents in Mid-Day Meal has been issued.

**12. Tasting of Meal**

Community participation in tasting of meals is very poor. In fact, it is absent in most schools despite numerous appeals to the community members. There is need of immediate involvement of State Govt. of Mizoram to find out the reason for their poor participation. Accordingly probable solution should be issued by State Govt. for strict implementation at School level.

Moreover there was no Information, Education and Communication (IEC) activity (i.e. Radio Zingle, Short Movies / Media activity for advertise the right of Children etc.) done in past few years.

**13. Centralized Kitchens and involvement of NGOs**

The Mid Day Meal Scheme is being implemented through School Management Committees(SMC's) in all schools in the State. No NGO/Trust/Temples /Gurudwara /Jails/ Community Based Organization (CBOs)/ PRI's as well as centralized kitchens are involved in the implementation of the Mid Day Meal Scheme in the State

**14. Cooking Competition**

No cooking competition is organized in the state, Kitchen Garden Competition and MDM Performance Competition is organized in each and every district.

10(ten)best schools are awarded as under

1st Prize - Rs. 6000/- with Citation

2nd Prize - Rs. 4000/- with Citation

3rd Prize - Rs. 2000/- with Citation

Consolation Prize 4th-10th - Rs. 1000/- with Citation.

**15. Capacity Building**

State Government informed that training programme has been conducted for 852 Cooks-cum-Helpers and 33 Master Trainers during 2019-20. SMC members, school teachers and

others stakeholders also participated in performance review. At the same time District level and Block level authority conducted training for Cook-cum-Helpers are mentioned below :

*During 01.04.2019 to 31.12.2019*

S.No.	Name of District	Total no. of Cook-cum-Helpers engaged	Total no. of Cook-cum-Helpers trained during the year	No. of Master Trainers	Duration of training	Modules used in the training	Name of Training Agency
<i>1</i>	<i>2</i>	<i>3</i>	<i>4</i>	<i>5</i>	<i>6</i>	<i>7</i>	<i>8</i>
1	Aizawl	946	370	8	<i>1 day</i>	-	Tourism Department
2	Champhai	462	0	4		-	Tourism Department
3	Kolasib	359	340	4	<i>2 days</i>	-	Tourism Department
4	Lawngtlai	834	0	3		-	Tourism Department
5	Lunglei	1012	0	4		-	Tourism Department
6	Mamit	543	41	5	<i>1 day</i>	-	Tourism Department
7	Serchhip	248	101	3	<i>1 day</i>	-	Tourism Department
8	Siaha	389	0	2		-	Tourism Department
<b>Total</b>		<b>4793</b>	<b>852</b>	<b>33</b>	<b>0</b>	<b>0</b>	<b>0</b>

#### **16. Contingency Plan to avoid any untoward incident**

It is to mention that Emergency Medical Plan at state level as well as district level has been developed. Almost the school have now displayed important contact numbers on the wall of school building like, Police station, Hospital, Ambulance and Fire station etc. Further, safety measures has been taken by means of awareness campaign.

--oOo--

**PART-C : State Govt.'s Proposals and Recommendations of Appraisal Team for 2020-21**

S. No.	Component	PAB Approval 2019-20	Proposal for 2020-21	Recommendations by Appraisal Team
<b>1</b>	<b>Institutions</b>			
1.1	Primary	1431	1420	1420
1.2	Upper Primary	1093	1091	1091
<b>2</b>	<b>Children</b>			
2.1	Primary	87152	82573	82573
2.2	Upper Primary	39021	38897	38897
2.3	NCLP	0	0	0
<b>3</b>	<b>Working Days</b>			
3.1	Primary	202	201	201
3.2	Upper Primary	212	216	216
3.3	NCLP	0	0	0
<b>4</b>	<b>Cook cum Helper</b>			
4.1	Primary	2822	2822	2822
4.2	Upper Primary	2072	2072	2072
<b>5</b>	<b>Drought</b>			
5.1	Children (Pry)	0	0	0
5.2	Children (U Pry)	0	0	0
5.3	Working days	0	0	0
5.4	Cook-cum-helpers	0	0	0
<b>6</b>	<b>Non Recurring</b>			
6.1	Kitchen-cum-Stores	9	0	0
6.2	Repair of kitchen-cum-stores	1533	0	0
6.3	Kitchen Devices (New)	7	0	0
6.4	Kitchen Devices (Replacement)	608	567	567
			(Against sanctioned in year 2013-14)	(Against sanctioned in year 2013-14)
<b>7</b>	<b>Central Assistance (Rs in Lakh)</b>			
7.1	Regular	Rs. 1871.98	Rs. 2001.41	Rs. 2001.41
7.2	Drought	0	0	0
7.3	Kitchen cum Store	28.35	0	0
7.4	Repair of kitchen-cum-stores	137.97	0	0
7.5	Kitchen Devices (new)	0.72	0	0
			(0 KD – New)	(0 KD – New)

7.6	Kitchen Devices (Replacement)	71.1	65.30	65.30
			(567 KD – Replacement)	(567 KD – Replacement)
7.7	Flexible Funds For establish the 1320 - School Nutrition Garden / Distribution Additional Nutrition Items	59.40	5.94	5.94
7.8	Summer Vacation Budget for FY-2020-21	0.00	228.41	22.11
<b>7.9</b>	<b>Grand Total</b> <b>(Total of 7.1 to 7.8)</b>	<b>Rs. 2169.52</b>	<b>Rs. 2295.12</b>	<b>Rs. 2295.12</b>



State : MIZORAM

**QUANTIFICATION OF CENTRAL ASSISTANCE FOR 2020-21****A. Food grains**

Sl. No.	Stage	No. of Children	Working days	Quantity (in MTs)		
				Rice	Wheat	Total
1	Primary (@ 100 gms per child per school day)	82573	201	1659.72	0	1659.72
2	U. Primary (@ 150 gms per child per school day)	38897	216	1260.26	0	1260.26
3	NCLP (@ 150 gms per child per school day)	0	0	0	0	0
4	<b>Drought</b>					
4.1	Primary	0	0	0	0	0
4.2	Upper Primary	0	0	0	0	0
<b>TOTAL</b>		<b>121470</b>		<b>2919.98</b>	<b>0</b>	<b>2919.98</b>

**B. Cost of Food-grains, Cooking cost, Transport Assistance, Honorarium to Cook-Cum-Helpers and Management Monitoring and Evaluation (MME)**

Sl. No.	Component/norm	Amount admissible (Rs. in lakh)
1	2	3
<b>Primary</b>		
1	Cost of Food grains @ Rs. 3000 per MT for rice for 1659.72 MTs	49.79
2	Unit Cooking Cost- Rs. 4.97/- per child per day	
2.1	Central Share @ Rs. 4.47/-per child per day for 82573 Children	741.89
2.2	<b>Minimum Mandatory State Share @ Rs 0.50/- per child per day for 82573 Children</b>	82.99
3	Transportation Cost @ Rs. 3970/- Per MT food grains for 1659.72 MTs	65.89
4	<b>Honorarium for cook cum Helper</b>	
4.1	<b>Central Share - @ Rs 900/- for 10 months) for 2822 Cook-cum-Helpers</b>	253.98
4.2	<b>State Share - @ Rs 100/- for 10 months) for 2822 Cook-cum-Helpers</b>	28.22
5	<b>Management Monitoring and Evaluation (MME) @ 2.7% of the</b> i) Cost of food grains ii) Cooking cost iii) Cost of transportation and iv) Honorarium to cook – cum-helpers	30.01
<b>Total Central Share for Primary</b>		<b>1114.57</b>

<b>Upper Primary</b>		
6	Cost of Food grains @ Rs. 3000 per MT for rice for 1260.26 MTs	37.81
7	<b>Unit Cooking Cost- Rs. 7.45/- per child per day</b>	
7.1	<b>Central share @ Rs. 6.70/- per child per day for 38897 Children</b>	562.92
7.2	<b>Minimum Mandatory State Share @ Rs.0.75/- per child per day for 38897 Children</b>	63.01
8	Transportation cost @ Rs. 3970/- Per MT food grains for 1260.26 MTs	50.03
9	<b>Honorarium for cook cum Helper</b>	
9.1	<b>Central Share - @ Rs 900/- for 10 months) for 2072 Cook-cum-Helpers</b>	186.48
9.2	<b>State Share - @ Rs 100/- for 10 months) for 2072 Cook-cum-Helpers</b>	20.72
10	<b>Management Monitoring and Evaluation (MME) @ 2.7% of the</b> 1) Cost of food grains 2) Cooking cost 3) Cost of transportation and 4) Honorarium to cook – cum-helpers	22.61
<b>Total Central Share for Upper Primary</b>		<b>859.84</b>
<b>NCLP</b>		
11	Cost of Food grains @ Rs. 3000 per MT for rice and Rs 2000 per MT for wheat	
12	<b>Unit Cooking Cost- Rs. .... per child per day</b>	
12.1	<b>Central share @ Rs. .... per child per day</b>	
12.2	<b>Minimum Mandatory State Share @Rs. .... per child per day</b>	
12.3	Transportation cost @ Rs. .... Per MT food grains	
12.4	<b>Management Monitoring and Evaluation (MME) @2.7% of the</b> 1) Cost of food grains 2) Cooking cost and 3) Cost of transportation	
<b>Total Central Share for NCLP</b>		<b>0.00</b>
<b>Total of Central Share (Primary + Upper Primary + NCLP)</b>		<b>2001.41</b>

**C. Drought :**

Sl. No.	Component/norm	Amount admissible
		(Rs. in lakh)
1	2	3
<b>Primary</b>		
1	Cost of Food grains @ Rs. 3000 per MT for rice and Rs 2000 per MT for wheat	
2	<b>Unit Cooking Cost- Rs. .... per child per day</b>	
2.1	<b>Central Share @ Rs. .... per child per day</b>	
2.2	<b>Minimum Mandatory State Share @ Rs. .... per child per day</b>	
3	Transportation Cost @ Rs. .... Per MT food grains	
4	<b>Honorarium for cook cum Helper</b>	
4.1	<b>Central Share - @ Rs. .... for 2 months)</b>	
4.2	<b>State Share - @ Rs. .... For 2 months)</b>	
5	Management Monitoring and Evaluation (MME) @2.7% of the <ul style="list-style-type: none"> <li>i. Cost of food grains</li> <li>ii. Cooking cost</li> <li>iii. Cost of transportation and</li> <li>iv. Honorarium to cook – cum-helpers</li> </ul>	
<b>Total Central Share for Primary (Drought)</b>		<b>0.00</b>
<b>Upper Primary</b>		
6	Cost of Food grains @ Rs. 3000 per MT for rice and Rs 2000 per MT for wheat	
7	<b>Unit Cooking Cost- Rs. .... per child per day</b>	
7.1	<b>Central share @ Rs. .... per child per day</b>	
7.2	<b>Minimum Mandatory State Share @ Rs. 2.60 per child per day</b>	
8	Transportation cost @ Rs. .... Per MT food grains	
9	<b>Honorarium for cook cum Helper (included in primary)</b>	
9.1	<b>Central Share - @ Rs. .... for ... months)</b>	
9.2	<b>State Share - @ Rs. .... for ... months)</b>	

10	Management Monitoring and Evaluation (MME) @2.7% of the i) Cost of food grains ii) Cooking cost iii) Cost of transportation and iv) Honorarium to cook – cum-helpers	
<b>Total Central Share for Upper Primary (Drought)</b>		<b>0.00</b>
<b>Total Primary + Upper Primary (Drought)</b>		<b>0.00</b>

**D. Non-recurring**

Sl. No.	Component	Amount admissible (Rs in Lakh)
1	Kitchen-cum-store	NIL
2	Repair of kitchen-cum-store for 0 - KS Repair	NIL
3	Kitchen Devices (New) for 0 – KD New	NIL
4	Kitchen Devices (Replacement – for 567 KD for the Year 2013-14 )	65.30
<b>Total Central Share (Non-recurring)</b>		<b>65.30</b>
<b>Flexible funds for New Interventions ( For School Nutrition Garden / Additional Nutritional Items etc.)</b>		
5	132 - School Nutrition Garden @Rs.5000/- per school	5.94
<b>Total Central Share (Non-recurring)</b>		<b>65.30</b>

**Mizoram—MDM Additional Proposal for Summer vacation during 2020-21**

Requirement of Additional Funds and foodgrains for provision of MDM during Summer Vacation in 2020-21										
Name of State : Mizoram										
Stage	Number of children	Number of days	Foodgrains (In Mts)	Cost of Foodgrains (Rs. in Lakh)	Cooking Cost -- Central Share (Rs. In Lakh)	Cooking Cost -- State Share (Rs. In Lakh)	Cooking Cost -- Total (Rs. In Lakh)	Transportation Assistance (In Lakh)	Total Amount - Centre Share	Total Amount - State Share
Primary	90602	29	262.75	7.88	117.45	13.13	130.58	10.43	135.76	13.14
Upper Primary	41247	29	179.42	5.38	80.14	8.97	89.11	7.12	92.65	8.97
<b>Total</b>	<b>131849</b>	<b>--</b>	<b>442.17</b>	<b>13.27</b>	<b>197.59</b>	<b>22.11</b>	<b>219.70</b>	<b>17.55</b>	<b>228.41</b>	<b>22.11</b>



---

**E. Total Requirement of Funds for FY - 2020-21****(Rs. in Lakh)**

<b>Component</b>		<b>Centre Share</b>	<b>Minimum Mandatory State Share</b>
<b>Recurring</b>	Normal	2001.41	194.94
	Drought	--	--
<b>Non- recurring</b>		65.30	7.26
<b>Summer Vacation Budget</b>		228.41	22.11
<b>Grand Total</b>		<b>2295.12</b>	<b>224.31</b>

\*\*\*\*\*